

Milestone 6

By Cianna Grummer
SmartStride



Milestone 6

Task	Progress	To Do
User and/or Developer Manual	100%	N/A
Demo Video	100%	N/A
SmartStride Poster	100%	N/A
Update User Guide	100%	N/A
Update About Us Page & Home Page Description	100%	N/A
System Testing & Evaluation	100%	N/A
Severity Bar Functionalities	100%	N/A
Angle & EMG Graph	100%	N/A



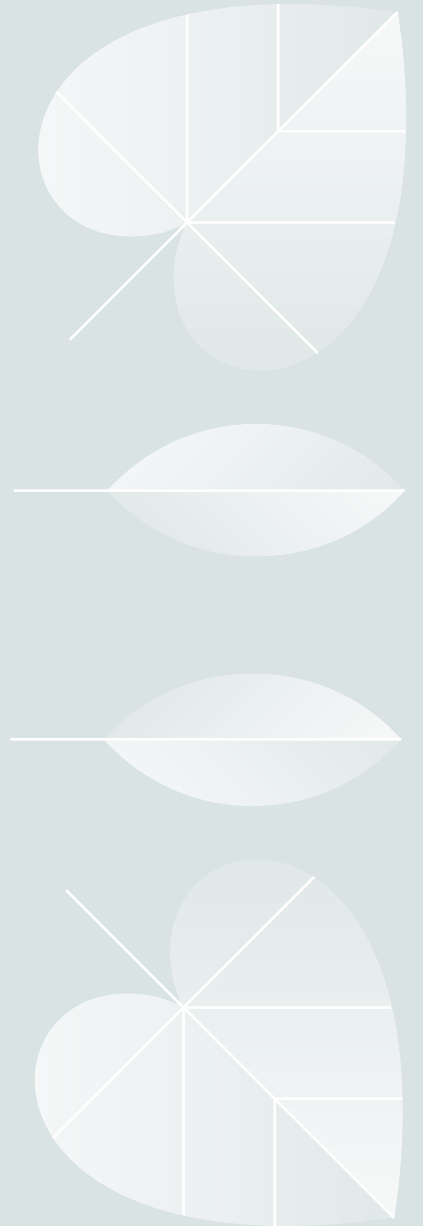
User and Developer Manual

- User Manual
 - *Two user types patient and clinician*
 - Shared sections: Sign-up, Log-in, Device Guide
 - Patient sections: Raspberry Pi app guide, manual upload, reading pie charts and severity bar
 - Clinician sections: Adding/dropping patients, viewing patient data, editing patient goals
- Developer Manual:
 - *Diagrams and explanations of website structure, database structure, AWS tools (API, RDS, CloudWatch etc.)*
 - *How to guide for accessing the database using VCP security groups*



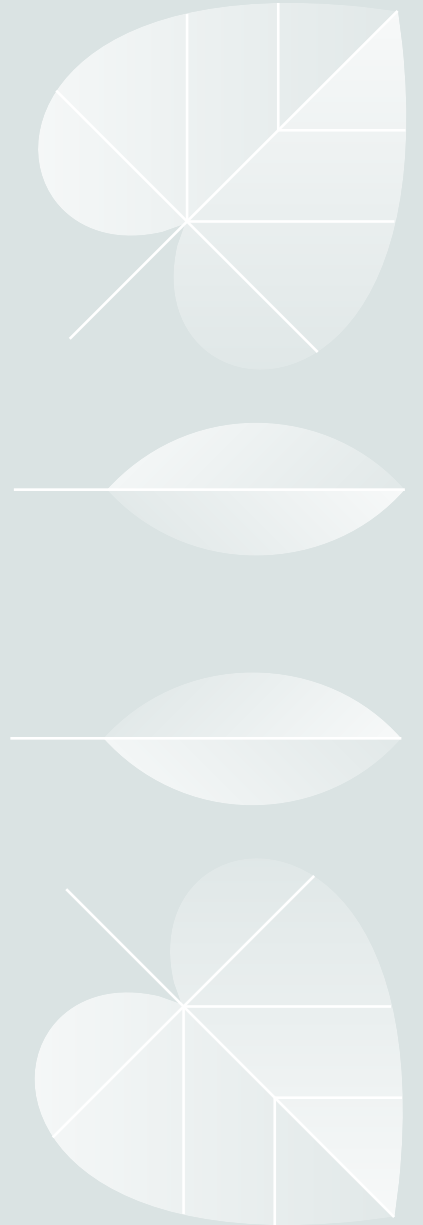
Demo Video

- Will show key website features:
 - *Sign-up and Log-in*
 - *Uploading data*
 - *Patient & clinician dashboards*
 - *Past results with filters*
 - *Raspberry Pi app*
 - *Real time updates when uploading data*



Updating User Guide, About Us, and Home Page Descriptions

- User Guide Page:
 - *Includes:*
 - SmartStride device instructions
 - Raspberry Pi app instructions
 - User manual for patients and clinicians
- About us page and home page
 - *Rewritten to better describe the SmartStride device and website*
 - What it is used for
 - Why it was made



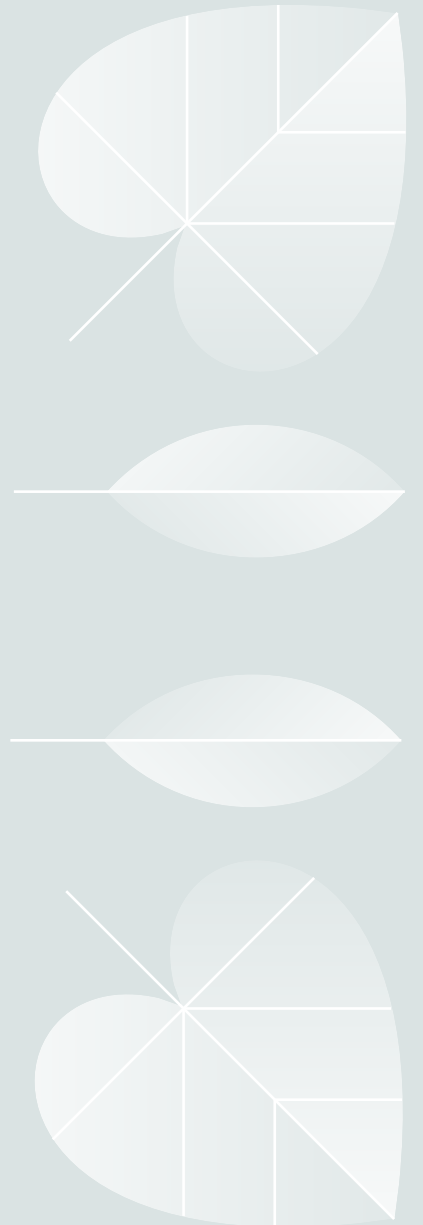
System Testing & Evaluation

- Three evaluation categories:
 - *Usability*
 - 4.68 stars average
 - Low: 4.36 stars
 - *Find past results page*
 - *Reliability*
 - Test data upload and login success rates
 - *Data upload: 100%*
 - *Login success rate: 100%*
 - *Accuracy*
 - Compare data uploaded to original data
 - 100%



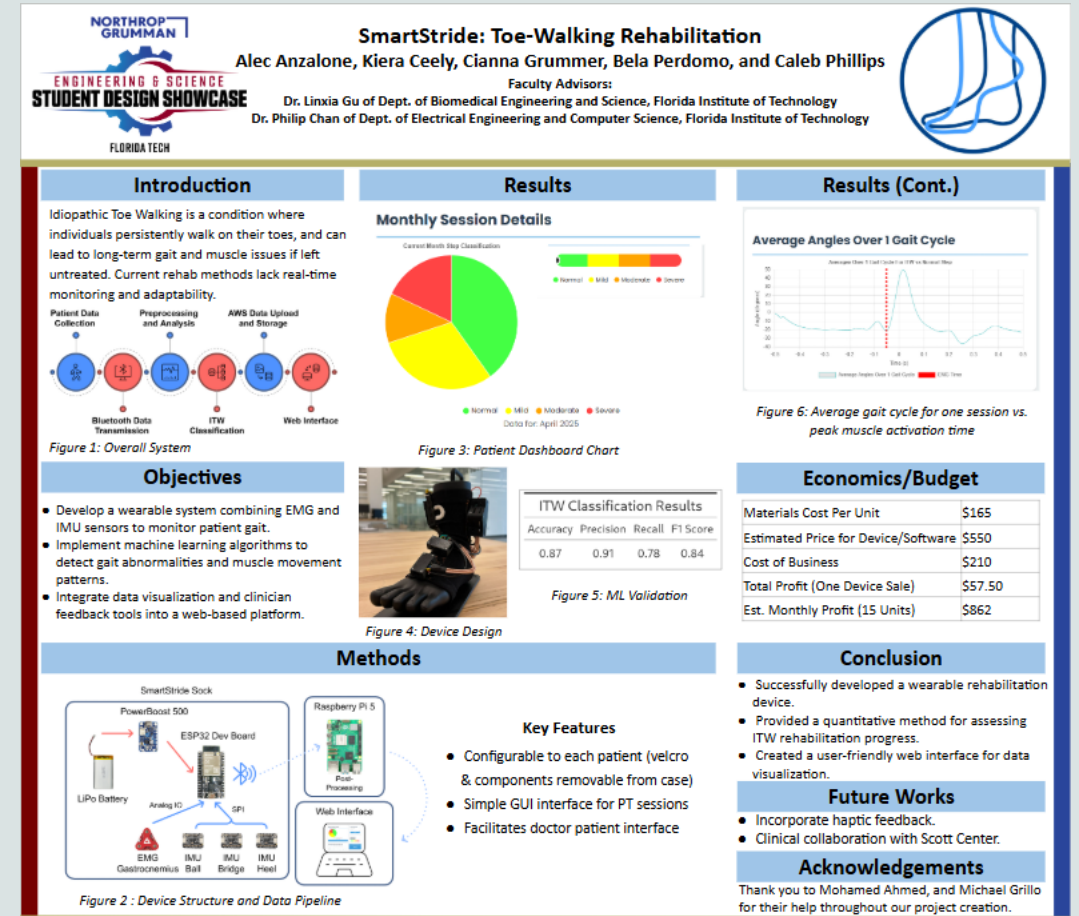
Angle & EMG Graph

- Database Overhaul:
 - *Split into Angle + EMG tables*
 - Linked via Session ID
- Clinician-Only View
- ML on Raspberry Pi identifies peak EMG point
- Upload logic detects file type via size/shape



Severity Bar Functionalities

- Integrates with Pie Chart data
- Highlights dominant category per month
- Auto-updates with each month's dataset





Questions?
